

## Portable Indoor Air Quality Monitor

Providing the latest in Monitoring & Data Logging for IAQ testing in Buildings, Hospitals, Schools, Labs, Clean Rooms, Airports, & more

- Multiple Parameters - Up to 11 (Customize UP to 7 Gases)
- REAL-TIME Continuous Data-Logging
- PC Software & USB Included
- Large Internal Memory (2000)
- Li-Ion Rechargeable Battery
- Easy to Use Menu System
- Optional Wireless Printer
- Portable w/ Swivel Handle
- Barometric Air Pressure
- Dual Temp TcK Inputs
- Optional Handheld Probe
- Active Internal Sampling Pump
- MADE IN USA 



% RH

Temp

Barometric Pressure

CO<sub>2</sub>

CO

VOC

Formaldehyde

NO<sub>2</sub>

NO

O<sub>3</sub>

O<sub>2</sub>

H<sub>2</sub>S

SO<sub>2</sub>

“Built with Quality in Mind”



Real-Time Data Logging for Graphs, Data Review, IAQ reports

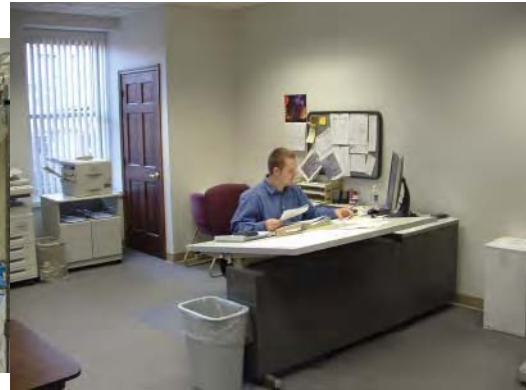
Wireless Communications with Computer & Remote Printer

Light Weight, Durable, and Easy to Transport Design

# AQ EXPERT



## Applications



CO<sub>2</sub>, CO, % RH, Temp, TVOC's, O<sub>2</sub>, NO, NO<sub>2</sub>, O<sub>3</sub>, CH<sub>2</sub>O, SO<sub>2</sub>, H<sub>2</sub>S, Barometric Pressure

## Features

### Custom to Your Application

Up to 7 different toxic gases to meet the needs of most air quality analyses

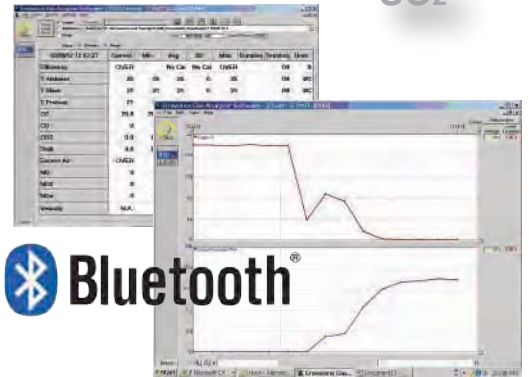
### REAL-TIME Data Logging

Save and graph using USB or wireless Bluetooth to a PC

NO<sub>2</sub> VOCs  
NO CH<sub>2</sub>O  
SO<sub>2</sub>

VOCs

CO<sub>2</sub>



AQ Gas<sup>®</sup> Real-time Datalogging Software

### Easy Calibration

Built-in menu driven calibration procedure

### Made in USA

Designed and manufactured in the USA



O<sub>3</sub> O<sub>2</sub>  
H<sub>2</sub>S % RH  
CO

**E Instruments International**

**www.E-Inst.com**

P: 215-750-1212 F: 215-750-1399 A: 402 Middletown Blvd, Ste 216 Langhorne, PA 19047

## Specifications

Parameter	Sensor	Range	Res.	Accuracy
CO <sub>2</sub>	NDIR	0 - 5,000 ppm	1 ppm	±2% rdg. ±10 ppm
CO <sub>2</sub>	NDIR	0 - 20%	0.1%	±3% rdg.
CO <sup>1</sup>	Electrochemical	0 - 200 ppm	0.1 ppm	±1 ppm rdg. ±0.2 ppm
% RH	Thin Film Capacitive	5 - 95% RH	0.1% RH	±2% RH
Ambient Temperature	Pt100	-40 - 257°F (-40 - 125°C)	0.1°C/F	± 2°F (32-140°F) (± 0.4°C [0-60°C])
VOCs	PID	0 - 20,000 ppb (0 - 46,000 µg/m <sup>3</sup> )	1 ppb (2.3 µg/m <sup>3</sup> )	10 % rdg. ± 20 ppb
VOCs	PID	0 - 200 ppm (0 - 460 mg/m <sup>3</sup> )	1 ppm (2.3 mg/m <sup>3</sup> )	10 % rdg. ± 50 ppb
O <sub>2</sub>	Electrochemical	0 - 25%	0.1%	±0.1% vol
Ozone (O <sub>3</sub> )	Electrochemical	0 - 5 ppm	1 ppb	
H <sub>2</sub> S <sup>1</sup>	Electrochemical	0 - 100 ppm	1 ppm	± 4% of rdg. ± 0.5% ppm
CH <sub>2</sub> O <sup>2,3</sup>	Electrochemical	0 - 10,000 ppb	1 ppb	2% rdg. ± 30 ppb
NO <sup>1</sup>	Electrochemical	0 - 250 ppm	0.1 ppm	±2 ppm of rdg.
NO <sub>2</sub> <sup>1</sup>	Electrochemical	0 - 20 ppm	0.1 ppm	±0.5 ppm of rdg.
SO <sub>2</sub> <sup>1</sup>	Electrochemical	0 - 20 ppm	0.1 ppm	±0.5 ppm of rdg.
Barometric Pressure	Solid State	260 - 1260 mbar	1 mbar	±2 mbar
Differential Pressure	Bridge	±32.0 inH <sub>2</sub> O (±80 mbar)	0.1 inH <sub>2</sub> O (0.25 mbar)	±1% rdg.
Temperature Type K T1 & T2	Tc K	0 - 2000°F (0 - 1100°C)	1°C/F	5°F (3°C) or 2% of rdg.
Air Velocity	Calculated	0 - 300 ft/sec	1 ft/sec	
<b>Electromagnetic compatibility</b>		EN 61326-1, Portable Equipment		

1. Other Ranges are Available Upon Request 2. Accuracy Based on Laboratory Conditions 3. This sensor may have interference from H<sub>2</sub>, CO, H<sub>2</sub>S and other reducing gases such as alcohols

## Accessories



Wireless Bluetooth Printer



Sampling Probe



Air Velocity w/ Pitot Tube



Carrying Case

## AQ EXPERT ORDERING CODE

Part Number: **EXPERT-** \_ \_ \_ \_ \_

(Example: **EXPERT-1-C-V1** = CO<sub>2</sub> (0-5000 ppm), Temp, % RH, Barometric Pressure, CO (0-200 ppm), VOC (0-20 ppm))

### AQ EXPERT Base Unit Including:

- CO<sub>2</sub>, Temp, % RH (choice of one (1) of the CO<sub>2</sub> sensor ranges below)
- Barometric Pressure, Wet Bulb & Dew Point
- Continuous Internal Sampling Pump
- REAL-TIME data logging
- PC Software (with USB Cable)
- Wireless Bluetooth & External Dongle
- Dual-channel TcK (Diff. Temp)
- Differential Pressure
- Differential Temperature
- Operating Manual
- Swivel Handle for Easy Transport
- Li-Ion Battery & AC Charger
- Factory Calibration Certificate



### ADD UP TO 6 (SIX) ADDITIONAL SENSORS FROM THE LIST BELOW:

PART NUMBER	DESCRIPTION
Expert-1	AQ Expert Base Unit w/ CO <sub>2</sub> Range: 0-5,000 ppm
Expert-2	AQ Expert Base Unit w/ CO <sub>2</sub> Range: 0-20% ppm
*-C	CO Sensor (0-200 ppm)
-V1	VOC Sensor (0-20,000 ppb)
-V2	VOC Sensor (0-200 ppm)
*-N	NO <sub>2</sub> Sensor (0-20 ppm)**
-Z	O <sub>3</sub> Sensor (0-5 ppm)**
*-H	H <sub>2</sub> S Sensor (0-100 ppm)
-O	O <sub>2</sub> Sensor (0-25%)
*-S	SO <sub>2</sub> Sensor (0-20 ppm)**
*-X	NO Sensor (0-250 ppm)
-F	CH <sub>2</sub> O Sensor (0-10,000 ppb)

\* Other Ranges are Available Upon Request

\*\* Note: All 3 O<sub>3</sub>, NO<sub>2</sub>, & SO<sub>2</sub> Sensors Cannot Concurrently be Installed on one Instrument

### OPTIONAL ACCESSORIES:

PART NUMBER	DESCRIPTION
E858140	Protective Carrying Case
E85AACSF13	12" (300mm) Probe, 10' (3m) Dual Hose
EE900P	Bluetooth Wireless Printer
BB610032	12" (300mm) Pitot Tube (Air Velocity)
AACKP01	Differential Pressure Kit

